

**CLINICAL RESULTS  
2001.**





## THE RESULTS OF ASSISTED REPRODUCTIVE TREATMENTS CARRIED OUT AT IVI DURING 2001.

In Vitro Fertilisation (IVF-ICSI)	3,361 cycles
Ovum donation (OVODON)	1,127 cycles
Frozen Embryo Transfer	582 cycles
Preimplantation Genetic Diagnosis (PGD)	177 cycles
<hr/>	
<b>TOTAL</b>	<b>5,247 cycles</b>





## 2001 RESULTS FOR IVF-ICSI

	<b>Transfer on day 2-3</b>	<b>Transfer on day 5-6</b>
Cycles carried out (transfers)	2,789 (2,382)	572 (512)
No. of pregnancies	1,170	250
% pregnancy following transfer	49,1	48,8
% implantation following embryo transfer	24,1	26,1
% multiple pregnancy	34,4*	45,8**

\* 78% twin

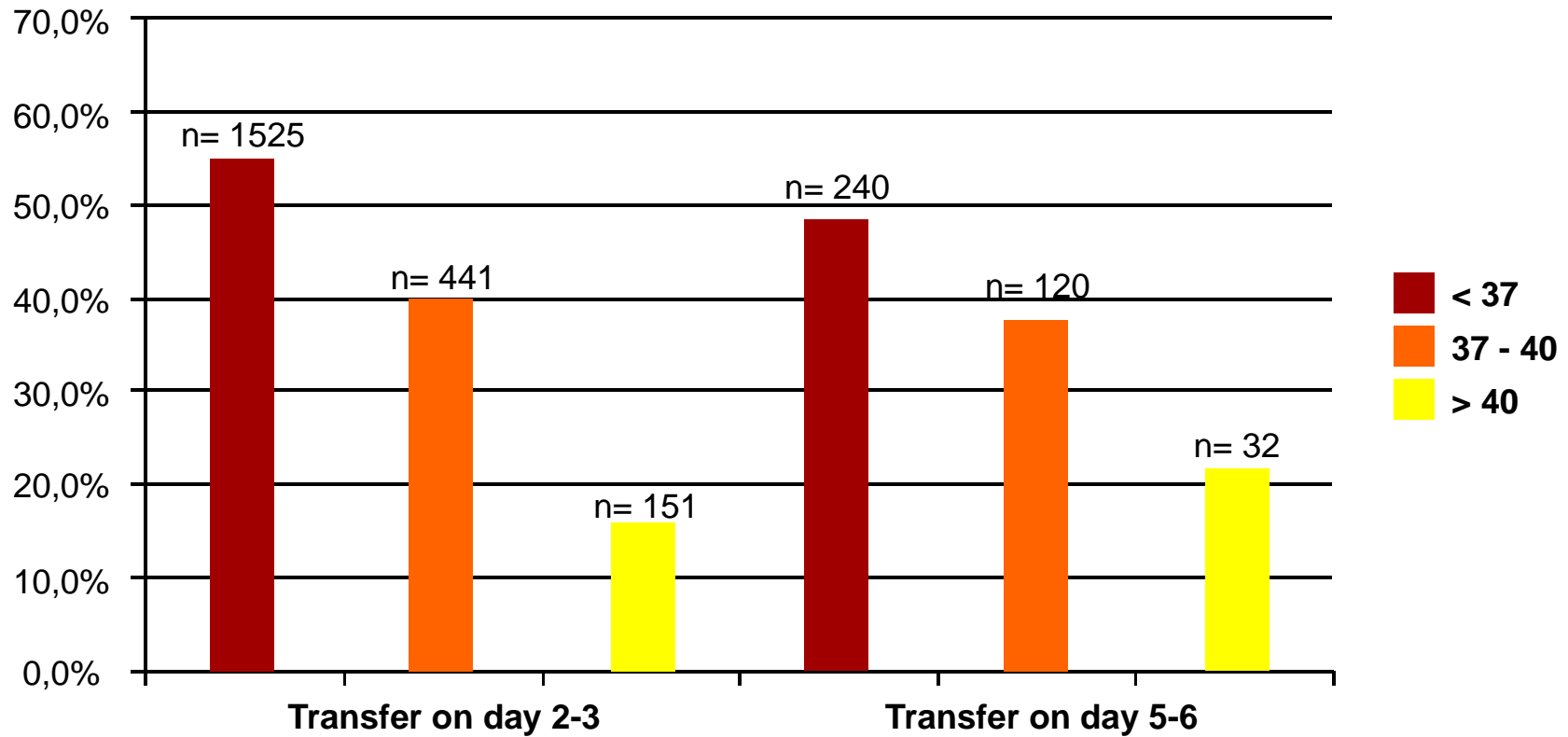
\*\* 82% twin



DATA AUDITED BY AN INDEPENDENT THIRD PARTY



## PREGNANCY AND IMPLANTATION RATES WITH IVF AND ICSI BY AGE GROUPS AND TRANSFER DAY





## 2001 RESULTS FOR OVUM DONATION

	<b>Transfer on day 2-3</b>	<b>Transfer on day 5-6</b>
Cycles carried out (transfers)	997	130
No. of pregnancies	549	79
% pregnancy following transfer	55,1	60,8
% implantation following embryo transfer	28,7	36,7
% multiple pregnancy	39,9*	45,4*

\* 87% twin

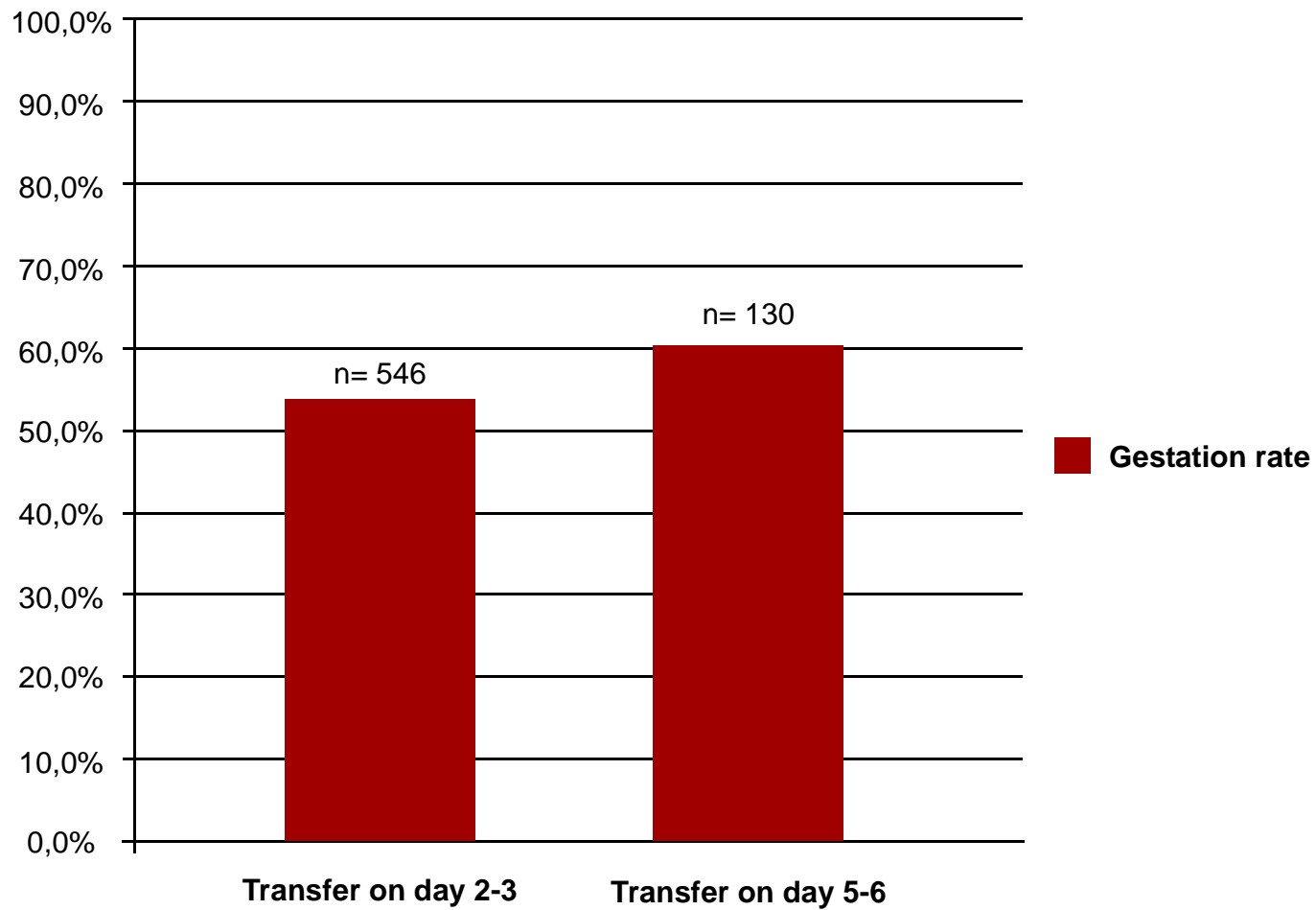
\*\* 82% twin



DATA AUDITED BY AN INDEPENDENT THIRD PARTY



## Pregnancy rate with OVUM DONATION based on transfer day Gestation rate



DATA AUDITED BY AN INDEPENDENT THIRD PARTY



## 2001 RESULTS FOR FROZEN EMBRYO TRANSFER

	<b>Total</b>
Embryos thawed (with transfer)	582 (452)
No. of embryos thawed	2.593
% embryo survival	68,7
No. of pregnancies	99
% pregnancy following transfer	44,4
% embryo implantation	21,7



DATA AUDITED BY AN INDEPENDENT THIRD PARTY



## 2001 RESULTS FOR PGD (Preimplantation Genetic Diagnosis)

	Previous implantation failures (3 or more)	Repeated miscarriage (3 or more)	Risk of chromosomal abnormalities	Chromosome translocations	Other symptoms
<b>No. of cycles (transfer)</b>	44 (35)	45 (37)	63 (48)	15 (10)	9 (7)
<b>% abnormal embryos</b>	68,6	66,8	54,5	78,5	42,2
<b>No. of pregnancies</b>	11	14	14	5	2
<b>% pregnancies</b>	31,4	37,8	29,2	66,7	22,2
<b>% implantation</b>	18,2	33,3	22,7	38,5	26,0

\* In older women (e.g. Down's syndrome)



DATA AUDITED BY AN INDEPENDENT THIRD PARTY





[www.ivi.es](http://www.ivi.es)