

CLINICAL RESULTS 2016





RESULTS OF ASSISTED REPRODUCTIVE TREATMENTS CARRIED OUT
AT THE IVI GROUP DURING 2016

In Vitro Fertilisation (IVF-ICSI)	12,876 cycles
Ovum Donation (OVODON)	6,989 cycles
Frozen Embryo Transfer	12,068 cycles
Preimplantation Genetic Diagnosis (PGD)	5,101 cycles
Vitrification of ova	4,117 cycles
Artificial Insemination (AI)	3,971 cycles
Total	45,122 cycles

NB: Number of procedures from our clinics in Spain+ Lisbon+ Latin America (Chile, Buenos Aires, Panama, Salvador, Mexico)+ Rome + Abu Dhabi.



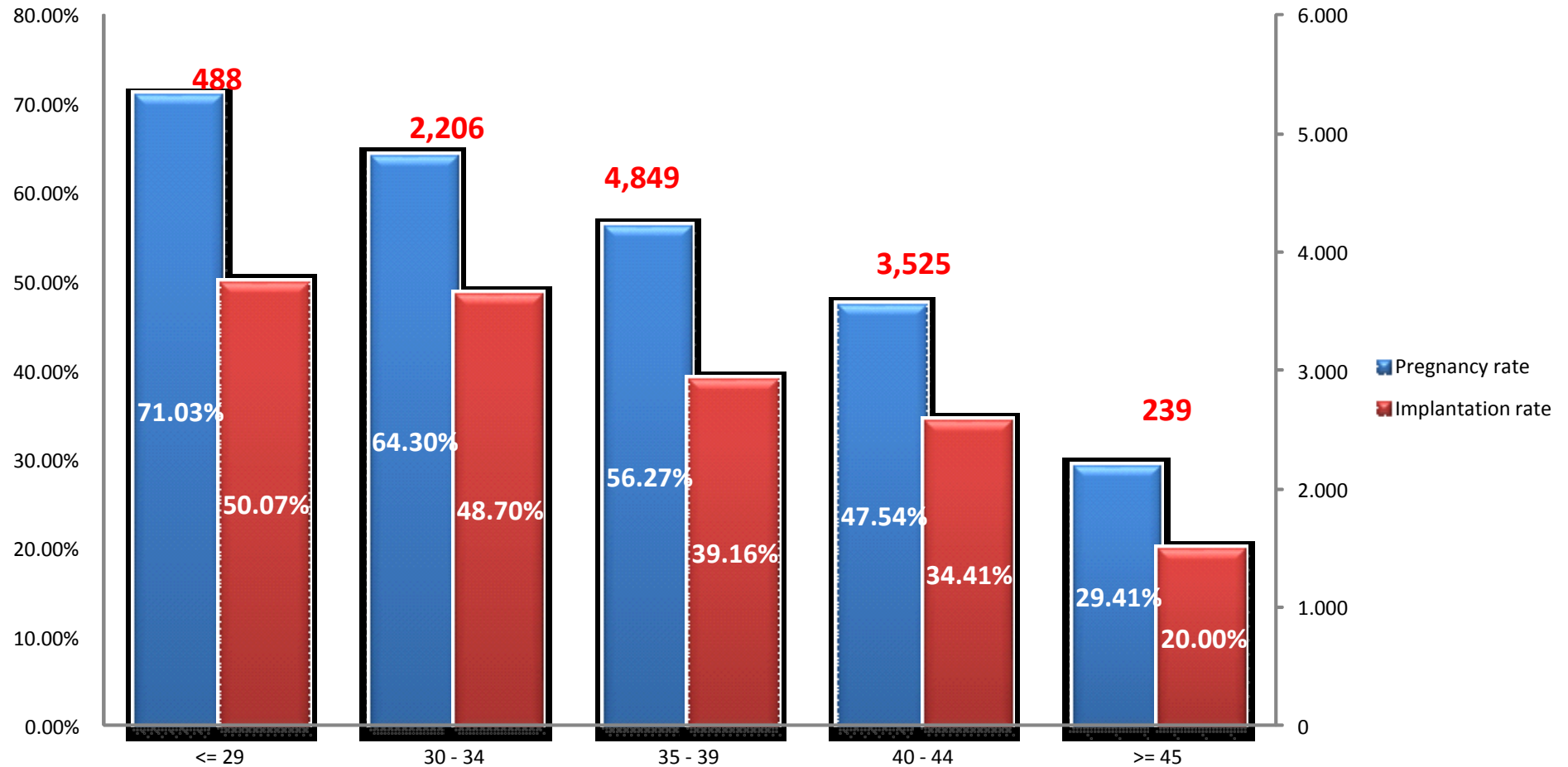
2016 RESULTS FOR IVF-ICSI AND OVUM DONATION (OVODON)

	IVF- ICSI	OVUM DONATION
Cycles performed (embryo transfers)	12,876 (5,173)	6,989 (5,692)
No. of pregnancies	2,847	3,888
% Pregnancy per Transfer	55.0	68.3
% Pregnancy per embryo transferred	38.3	52.6
% Twin pregnancy	22.4	21.6

NB: Number of procedures from our clinics in Spain+ Lisbon+ Latin America (Chile, Buenos Aires, Panama, Salvador, Mexico)+ Rome + Abu Dhabi



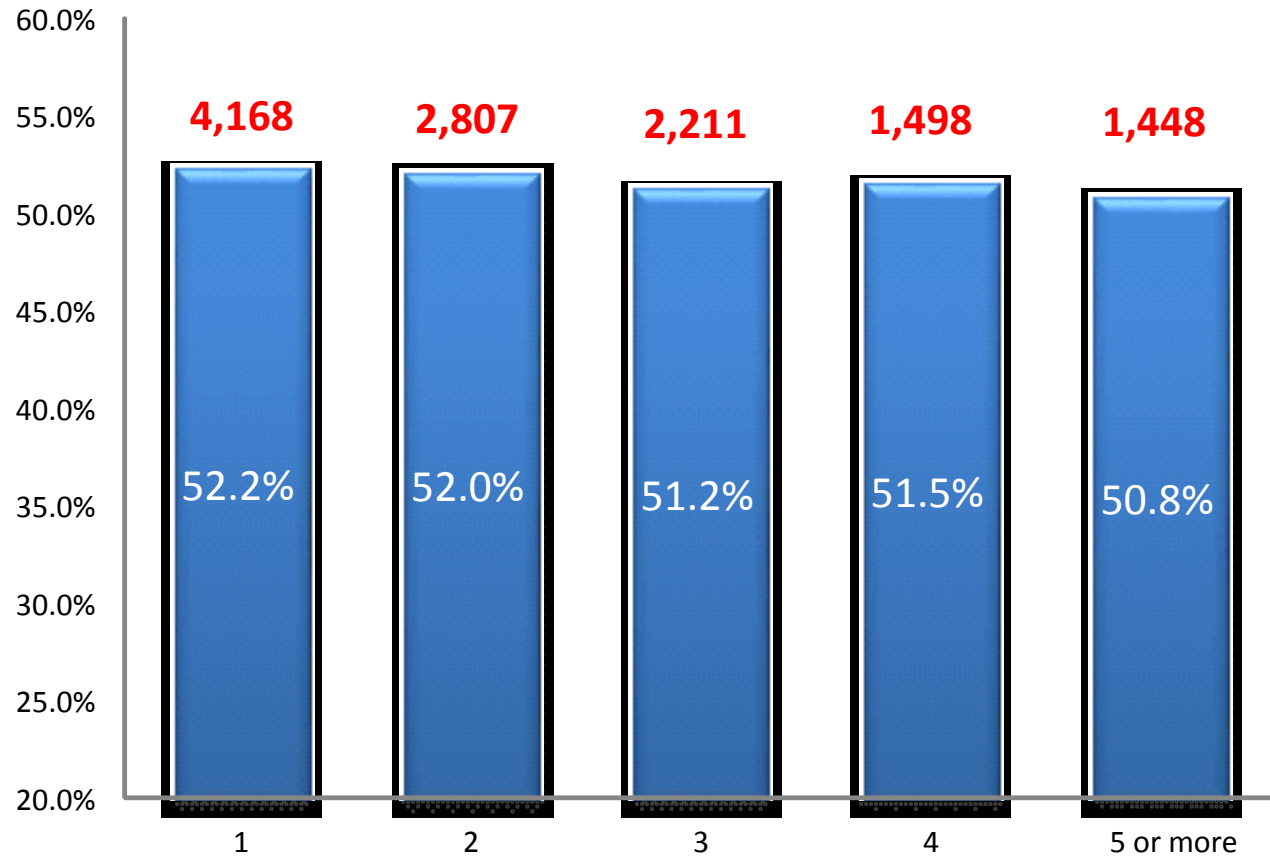
PREGNANCY AND IMPLANTATION RATES WITH IVF AND ICSI BY AGE GROUPS 2016



NB: These rates include fresh cycles and its deferred transfers (transfers of cryopreserved embryos from the fresh cycles). They apply to our clinics Spain+ Lisbon+ Latin America (Chile, Buenos Aires, Panama, Salvador, Mexico)+ Rome + Abu Dhabi.



PREGNANCY RATES FOR A FIRST IVF-ICSI ATTEMPT AT IVI CLINICS COMPARED TO PREVIOUS ATTEMPTS IN OTHER CLINICS.



NB: The chart shows treatment data for patients who have undergone previous cycles, including frozen cycles, between 2007 and 2016 at our clinics in Spain+Lisbon+Rome.



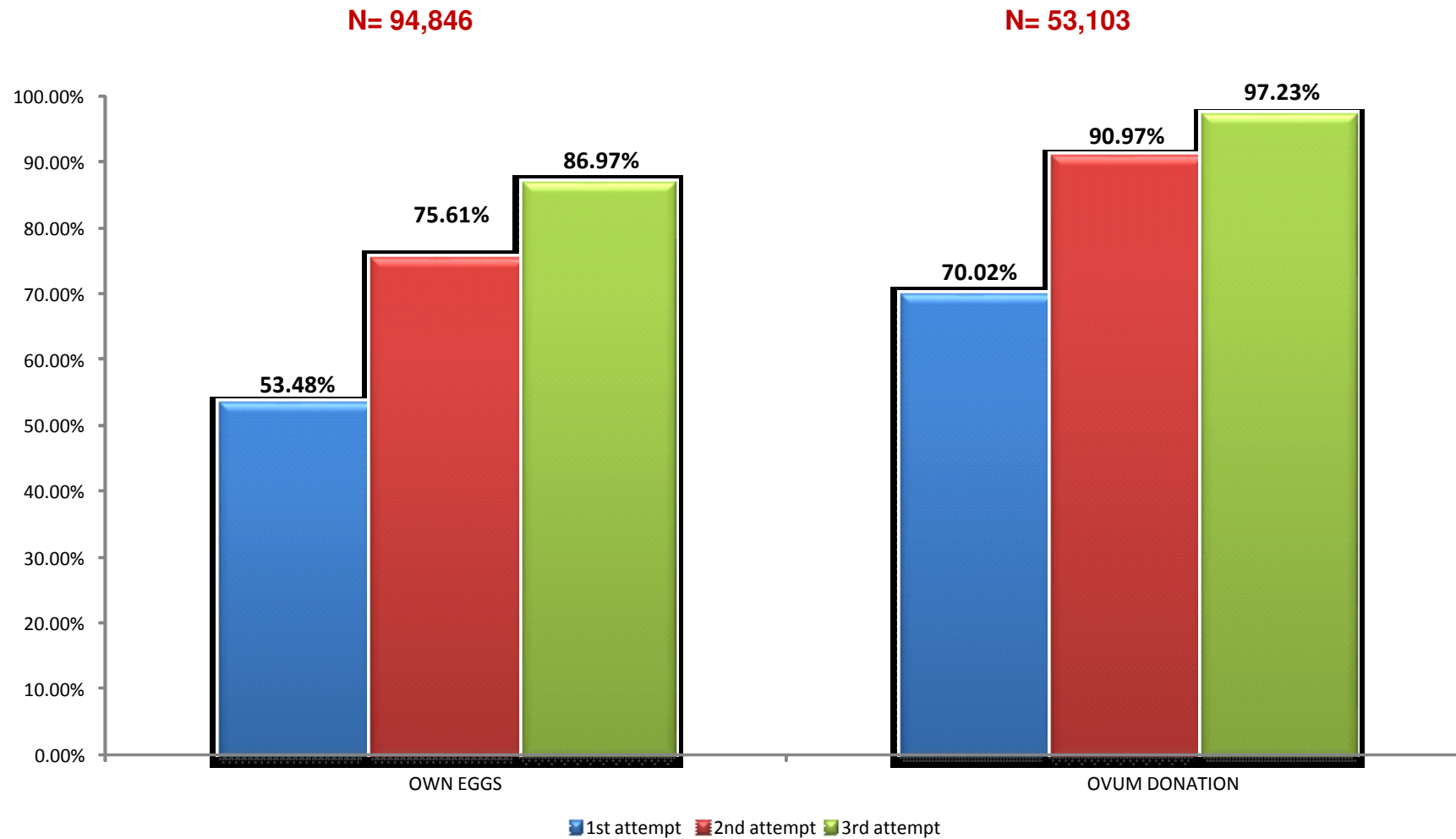
2016 RESULTS FOR FROZEN EMBRYO TRANSFERS

	TOTAL
Embryos thawed (Frozen Embryo Transfers)	12,068(11,340)
Rate of Embryo Transfer %	94.0
No. of pregnancies	6,059
% Pregnancy per Transfer	53.4
% Embryo Implantation	39.6

NB: Number of procedures from our clinics in Spain + Lisbon + Latin America (Chile, Buenos Aires, Panama, Salvador, Mexico)+ Rome + Abu Dhabi



CUMULATIVE CLINICAL PREGNANCY RATE AFTER THREE ATTEMPTS (including Frozen Embryo Transfers)



NB: The chart shows data for patients who were discharged from our clinics in Spain and Lisbon between 2005 and 2016.



2016 PGD RESULTS. Study of chromosomal abnormalities: FISH and CGH Arrays methods combined

	TOTAL
Cycles performed (Embryo Transfers)	3,210 (1,901)
% Abnormal Embryos	67.6
No. of Pregnancies	1,232
% Pregnancy per transfer	64.8
% Implantation	53.1

NB: The chart shows data for patients who undergone cycles with biopsy of embryos in our clinics in Spain+ Lisbon in 2016. The chart also includes the number of transfers involving frozen embryos that were previously biopsied in 2016.



Myotonic dystrophy, Fragile X Syndrome, Cystic Fibrosis, Spinal Muscular Atrophy...	
Cycles performed (Embryo Transfers)	121(106)
No. of Pregnancies	61
% Pregnancy per Transfer	57.5
% Implantation	46.4

NB: The chart shows data for patients who undergone cycles with biopsy of embryos in our clinics in Spain+ Lisbon in 2016. The chart also includes the number of transfers involving frozen embryos that were previously biopsied in 2016.



RESULTS FOR ARTIFICIAL INSEMINATION 2016

Treatment	Artificial Insemination (using donor sperm)	Artificial Insemination
No. of Cycles	1,909	2,062
Pregnancies	459	363
% Pregnancy/Cycle	24.0	17.6
% Twin Pregnancy	10.1	12.2

NB: Number of procedures from our clinics in Spain+ Lisbon+ Latin America (Chile, Buenos Aires, Panama, Salvador, Mexico)+ Rome + Abu Dhabi



LIVE BIRTH RATES (LB)

OWN EGGS

	AGE	OWN EGGS FRESH	OWN EGGS FROZEN	OWN EGGS (FRESH+ FROZEN)
LIVE BIRTH PER CYCLE	<35	43.7%	65.5%	49.4%
	35-37	32.6%	30.5%	32.0%
	38-39	22.3%	26.2%	23.3%
	40-42	11.4%	19.1%	24.0%
	43-44	2.8%	16.4%	5.1%
	>44	1.6%	13.5%	3.1%
LIVE BIRTH PER EMBRYO TRANSFERRED	<35	28.3%	45.0%	32.5%
	35-37	22.7%	21.8%	22.5%
	38-39	17.4%	19.4%	18.0%
	40-42	13.7%	15.8%	22.8%
	43-44	7.3%	16.2%	10.3%
	>44	6.6%	15.2%	9.7%
PROPORTION OF SINGLE BIRTHS	<35	70.6%	79.2%	72.7%
	35-37	76.8%	83.7%	78.8%
	38-39	84.4%	85.9%	84.9%
	40-42	88.6%	89.8%	89.0%
	43-44	92.9%	88.7%	90.7%
	>44	87.5%	90.5%	89.2%

DONOR EGGS

	FRESH OVUM DONATION	FROZEN OVUM DONATION	OVUM DONATION (FRESH+ FROZEN)
LIVE BIRTH PER CYCLE	46.8%	31.0%	41.5%
LIVE BIRTH PER EMBRYO TRANSFERRED	28.4%	21.7%	26.4%
PROPORTION OF SINGLE BIRTHS	71.8%	81.6%	74.4%

NB: The information shows the live birth rates from treatments at our clinics in Spain+ Lisbon between 2003 and 2015.



- **Pregnancy rate:** the percentage of positive results from biochemical pregnancy tests in relation to the number of embryo transfers.
- **Clinical pregnancy rate:** the percentage of pregnancies with a gestational sac observed by ultrasound scan in relation to the number of embryo transfers.
- **Implantation rate:** the percentage of gestational sacs observed by ultrasound scan in relation to the number of embryos transferred.
- **Twin pregnancy rate:** the percentage of pregnancies with 2 gestational sacs in relation to the total number of pregnancies.
- **Deferred Embryo Transfer:** embryo transfers that are not performed during the same stimulation cycle, where it is necessary to defer the transfer to a subsequent cycle using cryopreserved embryos.
- **Rate of abnormal embryos:** the percentage of abnormal embryos among the biopsied embryos.
- **Live birth per cycle:** the percentage of procedures with LB in regards to the total number of procedures.
- **Live birth per embryo transferred:** the percentage of LB in regards to the total number of transferred embryos.
- **Proportion of singleton LB:** the percentage of births with a singleton LB in regards to the total number of births.



www.ivi-fertility.com